





# The 1475

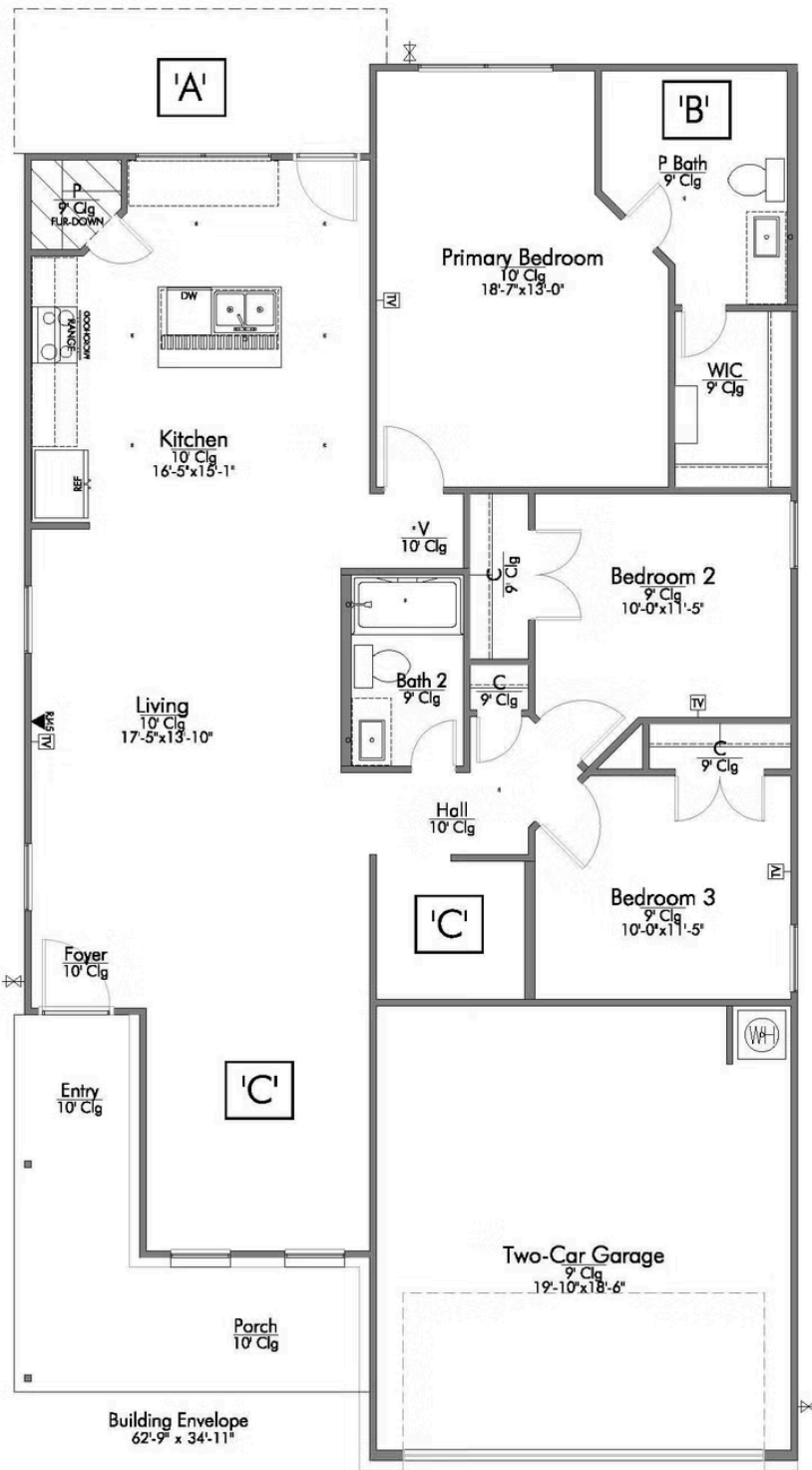


-  1,509 Ft<sup>2</sup>
-  3 Bedrooms
-  2 Bathrooms
-  2 Car Garage

**Some images shown may be from a previously built Stylecraft home of similar design. Actual options, colors, and selections may vary. Contact us for details!**

If you're wanting options and flexibility, this floor plan is exactly what you're looking for! This beautiful 3 bedroom, 2 bath home is thoughtfully designed to have three different options for the front room: a formal dining room, study, or 4th bedroom. You'll absolutely love the way the kitchen seamlessly flows into the living room, giving you ample space to gather with your family. From the luxuriously large primary bedroom with seating area, to the exquisite selections Stylecraft offers, you are guaranteed to love this home!





# 1475



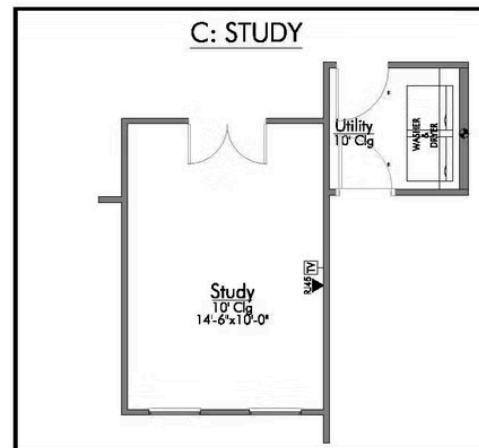
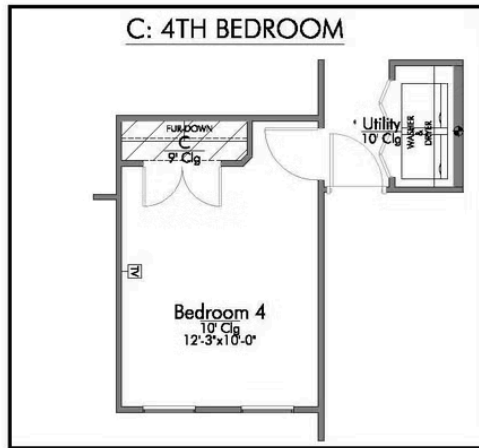
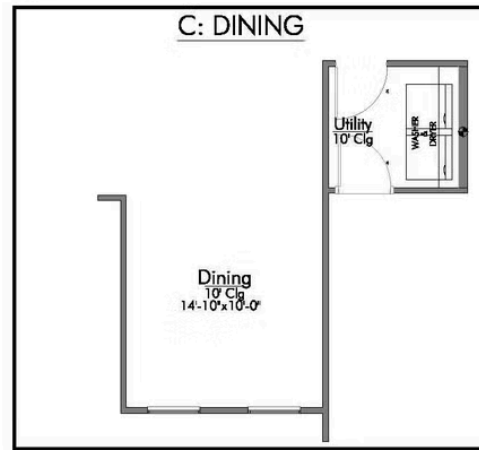
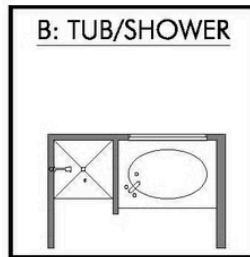
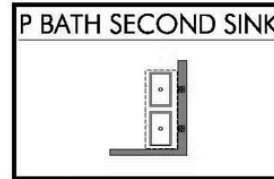
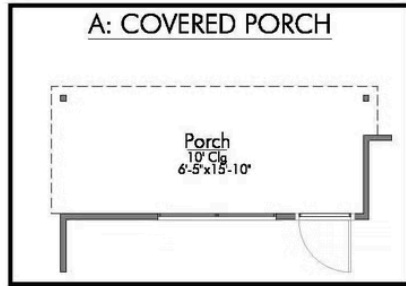
OPT. BEDROOM 4



OPT. STUDY



OPT. SINK





# S1475

